

Precincts: LE1, MO1, MO2, NE3, NE4, NE5, NE6, NE7, RR1, EU1, EU2, EU3, EU4, EU5, LE1:U, MO1:U, MO2:U, NE3:U, NE4:U1, NE5:U1, NE5:U2, NE6:U, RR1:U1, RR1:U2, RR1:USQ, NE4:U2

# OFFICIAL BALLOT FOR JUAB COUNTY, UTAH JUNE 23, 2026 REPUBLICAN BALLOT



**CERTIFIED BY THE CLERK OF JUAB COUNTY**

**INSTRUCTIONS TO VOTERS:** To vote for the candidate of your choice, completely fill in the oval ● next to the candidate's name. Use a black or blue ballpoint pen. If your ballot gets damaged, please contact the County Clerk's office.

Completely fill in the oval. ●

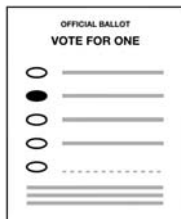
State Offices	County Offices
<b>Republican for State School Board District 14</b> Vote for One	<b>Republican for County Sheriff</b> Vote for One
○ LINDA HANKS	○ M. DRAKE UNDERWOOD
○ NICHOLE BEECHER ISOM	○ CHRIS PAINTER
County Offices	
<b>Republican for County Commissioner Seat A</b> Vote for One	
○ CHRIS L MEMMOTT	
○ J. DAVID FLETCHER	
<b>Republican for County Commissioner Seat B</b> Vote for One	
○ MARTY L. PALMER	
○ KEVIN C SNOW	

### HOW TO MARK YOUR BALLOT

Completely fill in the oval and vote for up to the number allowed

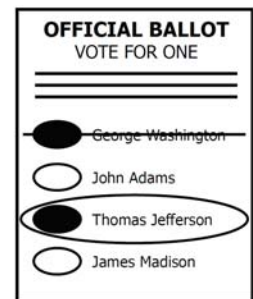
Avoid stray marks and ovals that are not completely filled

Do not sign, initial or make any identifying marks on your ballot



### IF YOU MAKE A MISTAKE:

- Do not use whiteout.
- Clearly cross out the entire name that you marked by mistake.
- Fill in the oval to the left of your correct choice, and circle the correct name together with the newly marked oval.



# OFFICIAL BALLOT FOR JUAB COUNTY, UTAH JUNE 23, 2026 REPUBLICAN BALLOT



## CERTIFIED BY THE CLERK OF JUAB COUNTY

**INSTRUCTIONS TO VOTERS:** To vote for the candidate of your choice, completely fill in the oval ● next to the candidate's name. Use a black or blue ballpoint pen. If your ballot gets damaged, please contact the County Clerk's office.

Completely fill in the oval. ●

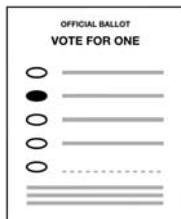
State Offices	County Offices
<b>Republican for State House District 29</b> Vote for One ○ ALEXIS WHEELER ○ SHELDON BIRCH	<b>Republican for County Commissioner Seat B</b> Vote for One ○ MARTY L. PALMER ○ KEVIN C SNOW
<b>Republican for State School Board District 14</b> Vote for One ○ LINDA HANKS ○ NICHOLE BEECHER ISOM	<b>Republican for County Sheriff</b> Vote for One ○ M. DRAKE UNDERWOOD ○ CHRIS PAINTER
County Offices	
<b>Republican for County Commissioner Seat A</b> Vote for One ○ CHRIS L MEMMOTT ○ J. DAVID FLETCHER	

### HOW TO MARK YOUR BALLOT

Completely fill in the oval and vote for up to the number allowed

Avoid stray marks and ovals that are not completely filled

Do not sign, initial or make any identifying marks on your ballot



### IF YOU MAKE A MISTAKE:

- Do not use whiteout.
- Clearly cross out the entire name that you marked by mistake.
- Fill in the oval to the left of your correct choice, and circle the correct name together with the newly marked oval.

